

# **Exam 000-551 study material**

**Made available by [Examsexpert.com](http://Examsexpert.com)**



## **Free 000-551 Exam Preparation Questions**

**Exam 000-551:** IBM Optima Implementation for Distributed Systems (2009)

**Question: 1**

You are installing Optim at a site where they are currently using an older version of Optim. After replacing the product libraries during the installation, which statement describes what must be performed to make the new version usable?

- A. From the Configuration Tasks menu, run both the Apply Maintenance for Optim Directory Access and Apply Maintenance for DB Alias Access tasks to install the new packages/plans.
- B. The newer version of Optim is automatically compatible with the older version currently installed at the site; do nothing.
- C. From the Configuration Tasks menu, run Apply Maintenance for Optim Directory Access only. The DB Aliases are automatically updated when the Directory is updated.
- D. The Product Options file for the new version must be copied over to replace the Product Options file for the old version.

**Answer: A**

**Question: 2**

When editing a table, one can right-click on any column and select "Lock". What does the Lock function do?

- A. "Lock" will request a table lock from the DBMS so that no other changes can be made.
- B. "Lock" will lock the column in place so that it is always visible during horizontal scrolling.
- C. "Lock" will lock the editing session so that no additional changes can be made to that column.
- D. "Lock" will lock the named Edit Request and finalize it in the Optim Directory.

**Answer: B**

**Question: 3**

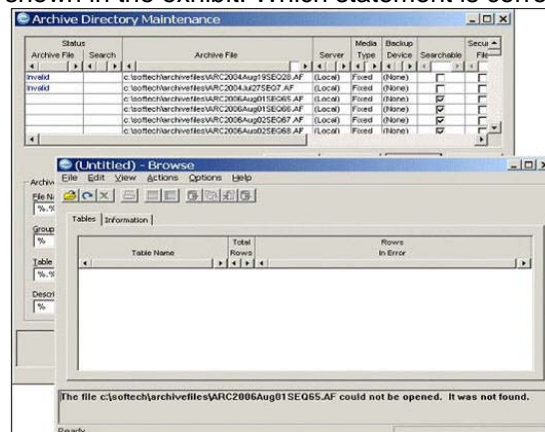
A client wants to Decommission an Oracle 9i application and an IMS application. They need to store the data in a central location. They will be accessing the data from various applications including COGNOS, Business Objects, and a home grown JDBC application. What is necessary to ensure success?

- A. An AIX Server, Windows Desktop, and Optim DRA
- B. A Sun Solaris Server and Multiple Windows Desktops with Rhumba
- C. Optim Data Growth with ODM
- D. Optim TDM, DP, and Archive with ODM

**Answer: C**

**Question: 4**

Click the Exhibit button. The client understands that the first two archive files shown in the exhibit are in an inaccessible status. When they try to browse the third archive file in the list, they get the error shown in the foreground window as shown in the exhibit. Which statement is correct?



- A. ARC2006Aug01SEQ65.AF is also corrupted and should just be deleted.

- B. ARC2006Aug01SEQ65.AF was moved; move it back into the same directory, and you should be able to browse it.
- C. The Optim Server needs to be started and then you should be able to browse ARC2006Aug01SEQ65.AF.
- D. The Windows workstation has too many applications running; shutting down other applications will free up enough memory to browse ARC2006Aug01SEQ65.AF.

**Answer: B**

**Question: 5**

When a process is executed, where are default variables and prompts for variable values defined?

- A. Compare Request
- B. Convert Request
- C. Access Definition Editor
- D. Personal Options

**Answer: C**

**Question: 6**

In which Optim processes can a Column Map exit be used?

- A. Archive, Restore
- B. Restore, Insert, Load, Convert
- C. Extract, Convert, Insert, Load, Delete
- D. Archive, Delete, Restore

**Answer: B**

**Question: 7**

Optim relationships are used by all Optim tools. If multiple relationships exist between a pair of tables, which two statements are important to note? (Choose two.)

- A. Optim will not allow you to create duplicate relationships between tables.
- B. Optim will view two relationships between tables as possible duplicates and ignore one.
- C. Optim will view two relationships between tables as possible duplicates but will still use both if selected.
- D. Optim allows duplicate relationships but will ignore them if they are in fact duplicate.
- E. Optim will keep cycling until all relevant rows have been found.

**Answer: C, E**

For complete [Exam 000-551 Training kits and Self-Paced Study Material](http://www.Examexpert.com/000-551.html)

Visit:

<http://www.Examexpert.com/000-551.html>



[www.Examexpert.com](http://www.Examexpert.com)



For Latest 000-551 Exam Questions and study guides- visit- <http://www.Examexpert.com/000-551.html>